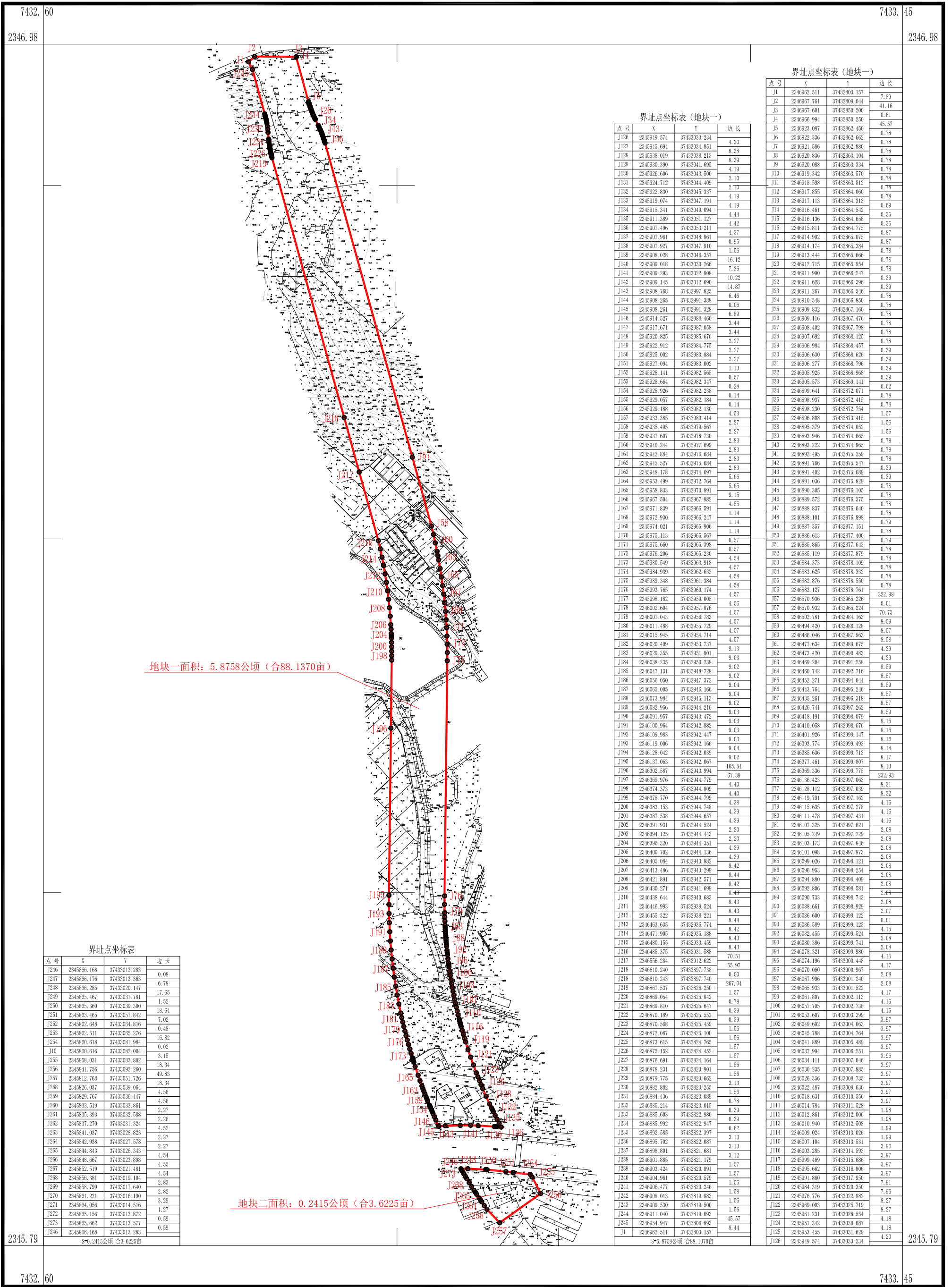
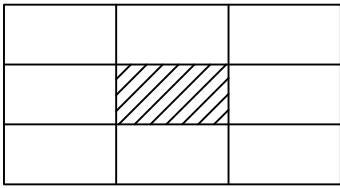


湛江市霞山区2025年度第十二批次城镇建设用地图

2345.790-37432.600



地块一面积: 5.8758公顷 (合88.1370亩)

地块二面积: 0.2415公顷 (合3.6225亩)

界址点坐标表

点号	X	Y	边长
J246	2345866.168	37433013.283	0.08
J247	2345866.176	37433013.363	6.78
J248	2345866.285	37433020.147	17.65
J249	2345865.467	37433037.781	1.52
J250	2345865.360	37433039.300	18.64
J251	2345863.465	37433057.842	7.02
J252	2345862.648	37433064.816	0.48
J253	2345862.511	37433065.276	16.82
J254	2345860.618	37433081.984	0.02
J10	2345860.616	37433082.004	3.15
J255	2345858.031	37433083.802	18.34
J256	2345841.756	37433092.260	49.83
J257	2345812.768	37433051.726	18.34
J258	2345826.037	37433039.640	4.56
J259	2345829.767	37433036.447	4.56
J260	2345833.519	37433033.861	2.27
J261	2345835.393	37433032.588	2.26
J262	2345837.270	37433031.324	4.52
J263	2345841.037	37433028.823	2.27
J264	2345842.938	37433027.578	2.27
J265	2345844.843	37433026.343	4.54
J266	2345848.667	37433023.898	4.55
J267	2345852.519	37433021.481	4.54
J268	2345856.381	37433019.104	2.83
J269	2345858.799	37433017.640	2.82
J270	2345861.221	37433016.190	3.29
J271	2345864.056	37433014.516	1.27
J272	2345865.156	37433013.872	0.59
J273	2345865.662	37433013.577	0.59
J246	2345866.168	37433013.283	0.59

S=0.2415公顷 合3.6225亩

界址点坐标表 (地块一)

点号	X	Y	边长
J126	2345949.574	37433033.234	4.20
J127	2345945.694	37433034.851	8.38
J128	2345938.019	37433038.213	8.39
J129	2345930.390	37433041.695	4.19
J130	2345926.606	37433043.500	2.10
J131	2345924.712	37433044.409	2.70
J132	2345922.830	37433045.337	4.19
J133	2345919.074	37433047.191	4.19
J134	2345915.341	37433049.094	4.44
J135	2345911.389	37433051.127	4.42
J136	2345907.496	37433053.211	4.37
J137	2345907.961	37433048.861	0.95
J138	2345907.927	37433047.910	1.56
J139	2345908.028	37433046.357	16.12
J140	2345909.018	37433030.266	7.36
J141	2345909.293	37433022.908	10.22
J142	2345909.145	37433012.690	14.87
J143	2345908.768	37432997.825	6.46
J144	2345908.265	37432991.388	0.06
J145	2345908.261	37432991.328	6.89
J146	2345914.527	37432988.460	3.44
J147	2345917.671	37432987.058	3.44
J148	2345920.825	37432985.676	2.27
J149	2345922.912	37432984.775	2.27
J150	2345925.002	37432983.884	2.27
J151	2345927.094	37432983.002	1.13
J152	2345928.141	37432982.565	0.57
J153	2345928.664	37432982.347	0.28
J154	2345928.926	37432982.238	0.14
J155	2345929.057	37432982.184	0.14
J156	2345929.188	37432982.130	4.53
J157	2345933.385	37432980.414	2.27
J158	2345935.495	37432979.567	2.27
J159	2345937.607	37432978.730	2.83
J160	2345940.244	37432977.699	2.83
J161	2345942.884	37432976.684	2.83
J162	2345945.527	37432975.684	2.83
J163	2345948.178	37432974.697	5.66
J164	2345953.499	37432972.764	5.65
J165	2345958.833	37432970.891	9.15
J166	2345967.504	37432967.982	4.55
J167	2345971.839	37432966.591	1.14
J168	2345972.930	37432966.247	1.14
J169	2345974.021	37432965.906	0.57
J170	2345975.113	37432965.567	0.57
J171	2345975.660	37432965.398	0.57
J172	2345976.206	37432965.230	4.54
J173	2345980.549	37432963.918	4.57
J174	2345984.939	37432962.633	4.58
J175	2345989.348	37432961.384	4.58
J176	2345993.765	37432960.174	4.57
J177	2345998.182	37432959.005	4.56
J178	2346002.604	37432957.876	4.57
J179	2346007.043	37432956.783	4.57
J180	2346011.488	37432955.729	4.57
J181	2346015.945	37432954.714	4.57
J182	2346020.409	37432953.737	9.13
J183	2346024.873	37432952.760	9.03
J184	2346029.335	37432951.791	9.02
J185	2346033.797	37432950.822	9.02
J186	2346038.259	37432949.853	9.01
J187	2346042.721	37432948.884	9.01
J188	2346047.183	37432947.915	9.02
J189	2346051.645	37432946.946	9.03
J190	2346056.107	37432945.977	9.03
J191	2346060.569	37432945.008	9.03
J192	2346065.031	37432944.039	9.04
J193	2346069.493	37432943.070	9.02
J194	2346073.955	37432942.101	165.54
J195	2346078.417	37432941.132	67.39
J196	2346082.879	37432940.163	4.40
J197	2346087.341	37432939.194	4.40
J198	2346091.803	37432938.225	4.40
J199	2346096.265	37432937.256	4.38
J200	2346100.727	37432936.287	4.39
J201	2346105.189	37432935.318	4.39
J202	2346109.651	37432934.349	2.20
J203	2346114.113	37432933.380	2.20
J204	2346118.575	37432932.411	4.39
J205	2346123.037	37432931.442	4.39
J206	2346127.500	37432930.473	8.42
J207	2346131.962	37432929.504	8.44
J208	2346136.424	37432928.535	8.42
J209	2346140.886	37432927.566	8.43
J210	2346145.348	37432926.597	8.43
J211	2346149.810	37432925.628	8.43
J212	2346154.272	37432924.659	8.43
J213	2346158.734	37432923.690	70.51
J214	2346163.196	37432922.721	55.97
J215	2346167.658	37432921.752	0.00
J216	2346172.120	37432920.783	267.04
J217	2346176.582	37432919.814	1.57
J218	2346181.044	37432918.845	0.78
J219	2346185.506	37432917.876	0.78
J220	2346189.968	37432916.907	0.78
J221	2346194.430	37432915.938	0.78
J222	2346198.892	37432914.969	0.78
J223	2346203.354	37432913.999	1.56
J224	2346207.816	37432913.030	1.56
J225	2346212.278	37432912.061	1.56
J226	2346216.740	37432911.092	1.57
J227	2346221.202	37432910.123	1.57
J228	2346225.664	37432909.154	1.56
J229	2346230.126	37432908.185	3.13
J230	2346234.588	37432907.216	1.56
J231	2346239.050	37432906.247	0.78
J232	2346243.512	37432905.278	0.78
J233	2346247.974	37432904.309	0.78
J234	2346252.436	37432903.340	0.78
J235	2346256.898	37432902.371	6.62
J236	2346261.360	37432901.402	3.13
J237	2346265.822	37432900.433	3.13
J238	2346270.284	37432899.464	3.12
J239	2346274.746	37432898.495	1.57
J240	2346279.208	37432897.526	1.57
J241	2346283.670	37432896.557	1.55
J242	2346288.132	37432895.588	1.58
J243	2346292.594	37432894.619	1.56
J244	2346297.056	37432893.650	1.56
J245	2346301.518	37432892.681	45.57
J1	2346305.980	37432891.712	8.44

S=5.8758公顷 合88.1370亩

界址点坐标表 (地块一)

点号	X	Y	边长
J1	2346962.511	37432803.157	7.89
J2	2346967.761	37432809.044	41.16
J3	2346967.601	37432850.200	0.61
J4	2346966.994	37432850.250	45.57
J5	2346923.087	37432862.450	0.78
J6	2346922.336	37432862.662	0.78
J7	2346921.586	37432862.800	0.78
J8	2346920.836	37432863.104	0.78
J9	2346920.086	37432863.334	0.78
J10	2346919.342	37432863.570	0.78
J11	2346918.598	37432863.812	0.78
J12	2346917.855	37432864.060	0.78
J13	2346917.113	37432864.313	0.69
J14	2346916.461	37432864.542	0.35
J15	2346916.136	37432864.658	0.35
J16	2346915.811	37432864.775	0.87
J17	2346914.992	37432865.075	0.87
J18	2346914.174	37432865.384	0.78
J19	2346913.444	37432865.666	0.78
J20	2346912.715	37432865.954	0.78
J21	2346911.990	37432866.247	0.39
J22	2346911.628	37432866.396	0.39
J23	2346911.267	37432866.546	0.78
J24	2346910.548	37432866.800	0.78
J25	2346909.832	37432867.160	0.78
J26	2346909.116	37432867.476	0.78
J27	2346908.402	37432867.798	0.78
J28	2346907.692	37432868.125	0.78
J29	2346906.984	37432868.457	0.39
J30	2346906.630	37432868.626	0.39
J31	2346906.277	37432868.796	0.39
J32	2346905.925	37432868.968	0.39
J33	2346905.573	37432869.141	6.62
J34	2346899.641	37432872.071	0.78
J35	2346898.937	37432872.415	0.78
J36	2346898.230	37432872.754	1.57
J37	2346897.523	37432873.102	1.56
J38	2346896.816	37432873.452	1.56
J39	2346896.109	37432873.802	1.56
J40	2346895.402	37432874.152	0.78
J41	2346894.695	37432874.502	0.78
J42	2346894.000	37432874.852	0.39
J43	2346893.300	37432875.202	0.39
J44	2346892.600	37432875.552	0.78
J45	2346891.900	37432875.902	0.78
J46	2346891.200	37432876.252	0.78
J47	2346890.500	37432876.602	0.78
J48	2346889.800	37432876.952	0.78
J49	2346889.100	37432877.302	0.79
J50	2346888.400	37432877.652	0.78
J51	2346887.700	37432878.002	0.78
J52	2346887.000	37432878.352	0.78
J53	2346886.300	37432878.702	0.78
J54	2346885.600	37432879.052	0.78
J55	2346884.900	37432879.402	0.78
J56	2346884.200	37432879.752	322.98
J57	2346883.500	37432980.102	0.01
J58	2346882.800	37432980.452	70.73
J59	2346882.100	37432980.802	8.59
J60	2346881.400	37432981.152	8.57
J61	2346880.700	37432981.502	8.57
J62	2346880.000	37432981.852	8.57
J63	2346879.300	37432982.202	8.59
J64	2346878.600	37432982.552	8.59
J65	2346877.900	37432982.902	8.